



Chameleon

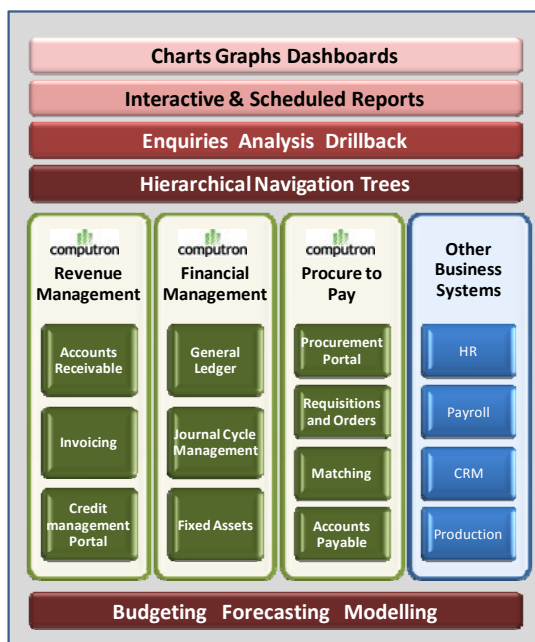
STRENGTH | CONTROL | INSIGHT

G2 is Computron's new .NET architecture under which we are upgrading our business solutions and integrating new modules to support our customers' drive for excellence and competitiveness. Our latest module is G2 Chameleon.

Accelerated Performance Management with Computron's G2 Chameleon

Computron's G2 inquiry modules provide Finance users the means to quickly analyse and resolve day to day Accounting and Controlling issues or use express techniques to research questions raised by customers, vendors and other stakeholders.

G2 Chameleon, our new interactive reporting, inquiry and budgeting module, complements this by offering Computron users a new dynamic for driving management information. It transforms the traditional Computron reporting model by providing interactive financial and management reports spanning all ledgers and rendered through live tables, charts, gauges and other graphical presentation techniques which can be combined into special interest Dashboards.



Chameleon also significantly extends Computron's budgeting and forecasting capabilities, which combined with its reporting introduce a Performance Management dimension. Computron users can now measure, analyse and report results, trends and key performance indicators across all aspects of their business.

Chameleon, integrates directly and securely with Computron's business applications to provide real time financial performance information to managers and staff at all levels of the organization. It is integrated with the rich G2 enquiries allowing research to drill right back to

transaction detail, supporting documentation and other audit information.

Its reach can extend beyond your Computron applications and the Finance Function, to combine data from other databases to give managers a full and relevant picture of business performance.



Key Features

- Explorer style tree navigation of Computron hierarchical structures
- Interactive Management Reporting across General Ledger and Sub-modules
- Notes comments attachments embedded within reports
- Computron templates for fast setup
- Simple Drag and Drop report building
- Slice, dice and filter
- Transaction Drillback through the Computron Ledgers
- Management Dashboards
- User favourites
- Budgeting, Forecasts & Planning
- Comprehensive budget building techniques and Approval
- Full Excel Integration
- Proactive Alerts
- Business Intelligence
- Hierarchy Tree Builder
- Up, running and productive on Computron GL in 2 days.
- Apply to data from other business systems

Key Features

- “Explorer” style tree navigation of Computron hierarchical structures

Your Computron coding structure is graphically presented within the Chameleon Navigation Tree allowing interactive navigation through the levels of a report. Hierarchies may represent your GL Dimension Set or any combination of dimensions and attributes. External hierarchies can also be constructed for additional reporting or modelling purposes with PowerTrees. For

sub-ledgers such as Accounts Receivables, hierarchies comprising attributes such as Account Manager, Sales Region, Customer Class etc can be defined.

- Interactive Management Reporting across General Ledger and Sub-modules

Chameleon delivers insight across the hierarchical structures, periods, currencies and accounting conventions associated with a general ledger analysis. The rich statistical database supporting Computron sub-modules can also be exploited to deliver summaries, transaction reports, performance KPIs and trend analyses at the various levels. Chart your customer portfolio, analyse your at-risk accounts and drill down to the relevant transaction detail. Is the collection process improving or getting worse? Analyse and manage the trend in DSO, reasons for exceptions and queries and queue bottlenecks. Is the Payments Process performing? Chart and manage the volume throughput, lost/achieved discounts, slow moving queues and backlogs.

As a Controller or CFO, you might want tabs providing salient financial measures of areas such as Balance Sheet, P&L, Receivable, Payable, Assets and a dashboard combining at a glance the current status of selected measures from each area. Alternatively emphasis could be given to business areas and segments.

- Notes comments attachments embedded within reports

Provide notes and other content to explain variances and budget logic and justification.

- Computron templates for fast setup

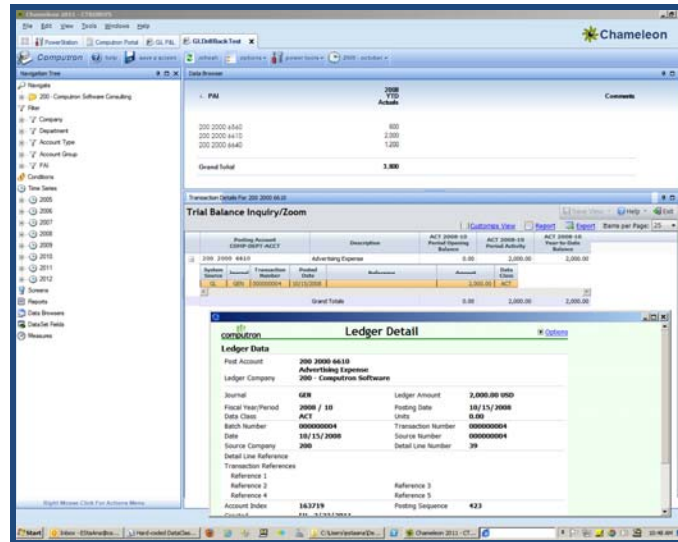
Computron delivers a number of templates and other preconfigured components enabling a fast implementation and delivery of results. Such templates enable an easy adaptation of your dimension set and other paths set to be represented in a familiar fashion through the Chameleon Navigation and Data Browser. Other reusable templates have been established to facilitate the reporting across factors such as Dataclasses, Currencies, periods and period displacement.

- Slice and dice Computron hierarchical structures

Simple conventions allow the user to change the focus of a report from one business angle to another – say from a departmental view to a line of business view.

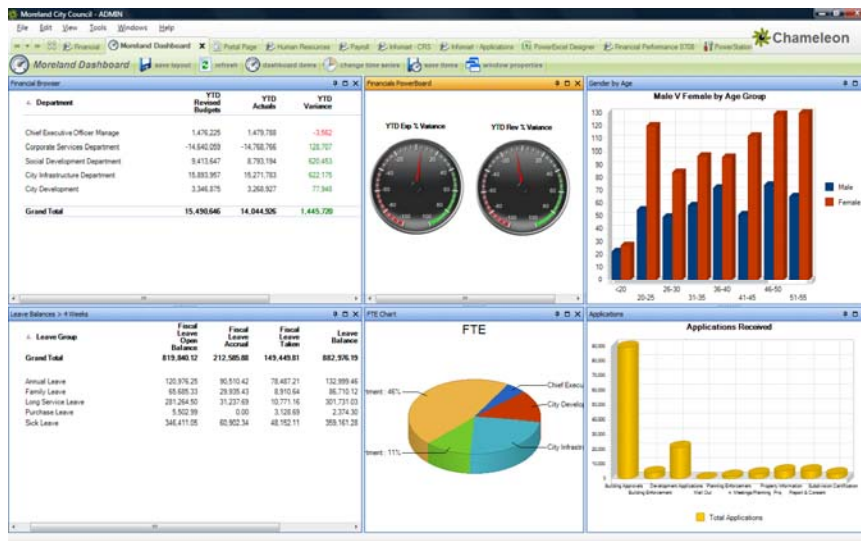
- Transaction Drillback

Navigate a management report and explore variances by drilling back directly into the supporting Computron financial module. Drillback can also be established into other business application databases.



- Management Dashboards

Individual interest and executive Dashboards are easy to create promoting “at a glance” feedback on the performance of key performance indicators. Based on the pre-established reports for General Ledger, Payables, Procurement, Receivables, and other applications, users can add content to their Dashboard through the simple drag and drop of reports, enquiries, charts etc from the various datasets to form a combined Dashboard.



- Budgeting, Forecasts & Planning

In addition to its reporting and analytical features, Chameleon offers a significant extension to Computron's budgeting features. Budgets, forecasts and other models can be built through the engagement of budget holders throughout the organisation under the control of a centralised database. This obviates the spreadsheet intensive exercise that typifies and hinders many budget cycles. Rather than maintaining, distributing, updating, collating, reconciling and revising umpteen spreadsheets, time after time, budgets are instead built by managers against their areas of responsibility directly within Chameleon with their progress and status being monitored. It manages your entire budget process from model updates, distributed capture, central adjustment, approval and update to the General Ledger. The resultant budgets and forecasts are available to Chameleon reports and current PRW, B&E and GL Excel tools.

Through Chameleon, Computron simplifies the entire budgeting process to allow focus on real analysis of the business and its cost drivers rather than being swamped with paperwork and competing, non-integrated spreadsheets.

- Comprehensive budget building techniques and Approval

Whatever style or combination of styles of budgeting is favoured, Chameleon has it covered:

- | | |
|--------------------------------|-------------------------------|
| ✓ Annual Budgets, | ✓ Resource (Capital) Budgets, |
| ✓ 5 year and long term budgets | ✓ Target Budgets, |
| ✓ Labour Budgets, | ✓ "Top Down", "Bottom Up" |
| ✓ Fee & Charges Budgets, | ✓ Budget Approvals Process |
| ✓ Forecasts, | ✓ Multi Layer Budget |
| ✓ Rolling Budgets, | ✓ Activity Based Budgets |

- Simple Drag and Drop report building

Users can add new columns to reports by dragging them from an available list and re-sequencing. Properties can be tailored through options in simple dialogue boxes. Users can save their report screens as preferences for future use.

- Full Excel Integration

Computron financial and transaction data can be rendered in graphical Excel reports, interacting with the navigation trees. This offers complete Excel integration combining the benefits of ad-hoc freehand report building, Excel functionality automated report scheduling and distribution.

- Proactive Alerts

Proactive alerts can be established to warn of a breach of pre-defined limits.

- Hierarchy Tree Builder

Hierarchy and relationship structures can be built on top of those already present within your Computron database. Your coding structure can be quickly mapped to new reporting lines, either to meet new regulatory or management requirements or to allow simulation and modelling.

These additional hierarchies can be for reporting and can also have budgets and forecasts maintained against them.

- Up, running and productive on Computron GL in 2 days.

Unlike many corporate BI ventures, Chameleon; through its templates, understanding of the Computron structure and affinity for the requirements of the Finance function, can produce results extremely quickly. Most Computron deployments would be able to drive their General Ledger through Chameleon's navigator and produce initial management reports within two days.

- Apply to data from other business systems

While Chameleon is a core Computron tool available and specialized for use against our financial applications, it can also address data from other sources. Typically this applies to other systems closely aligned to the Finance system such as HR, Payroll, CRM, Underwriting, Leasing, Asset Management, etc. This could be to present interactive reports and charts specialising on that data or to combine it with selective finance information within management dashboards.